

# **IRIDIUM**

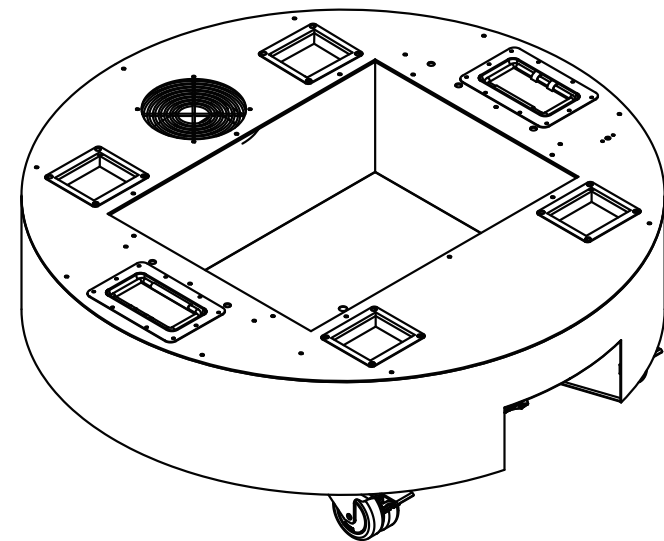
## **FanBase 850**

**CODE 105699**



**IMPORTATEUR:**

**B&K LUMITEC  
2 RUE ALFRED KASTLER ZONE  
INDUSTRIELLE 67850 HERRLISHEIM  
FRANCE  
[WWW.BKLUMITEC.COM](http://WWW.BKLUMITEC.COM)**



**CODE 105699**



## General safety information

### **Important information:**

- Read documentation carefully
- Only use equipment as instructed in this document
- Observe notes and symbols on the product
- Keep documentation on hand for later reference
- Pass documentation on to the next user
- Keep available near the system at all times
- Observe documentation for additional components used as well

### **Danger from electrical voltage**

- Only connect equipment to a grounded safety socket
- The corresponding fuse must be the correct size for the equipment
- Completely cut the power to the equipment before installation, cleaning, maintenance, or repairs
- Do not clean equipment under running water or by immersing in liquid

### **Maintenance and repair**

- Do not repair equipment yourself. Contact customer service or retailer.

**Inflate the rain cover/air totem by using higher air positions** (see pos. 6).  
After inflation, **reduce the air regulation to the necessary maintainable pressure for extend fan lifetime and noise reducing.**

The equipment is for the purpose of protecting small and medium-sized lighting systems from the impact of rain and other weather. The equipment may be used indoors to provide protection from rain effects. It may not be used for another purpose.

This equipment is not designed to be used by persons with limited physical, sensory, or mental abilities or insufficient experience and/or insufficient knowledge, unless supervised by a person responsible for their safety or have received instructions from them on how to use the equipment.

The manufacturer is not liable for damage that occurs as a result of improper use of the equipment.

### **Transport and storage**

Attention:

Do not drop equipment or expose it to severe mechanical pressure. The product can sustain damage from the impact.

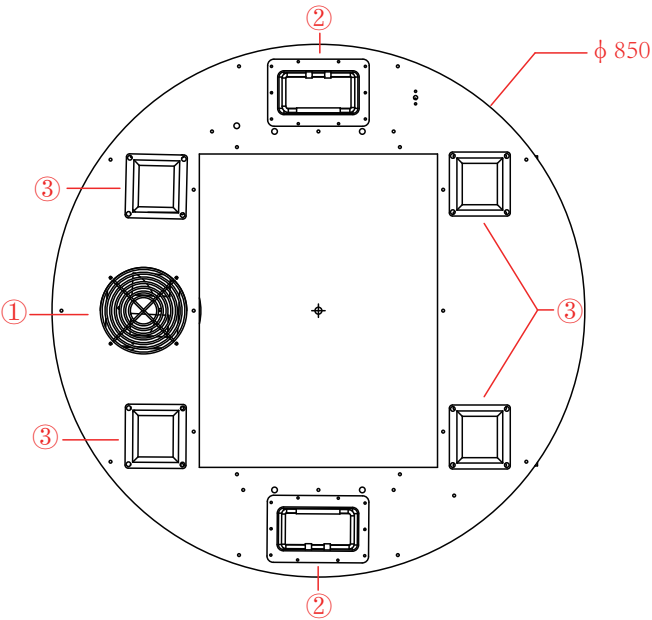
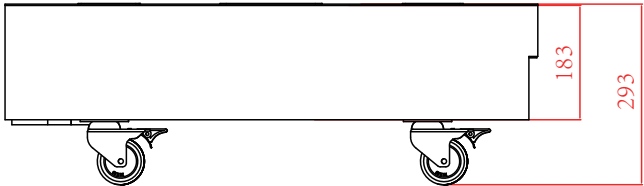
Only store equipment in dry areas.

Do not lift equipment by moving parts.

Use appropriate packaging material or the packaging material provided for storage and transport.

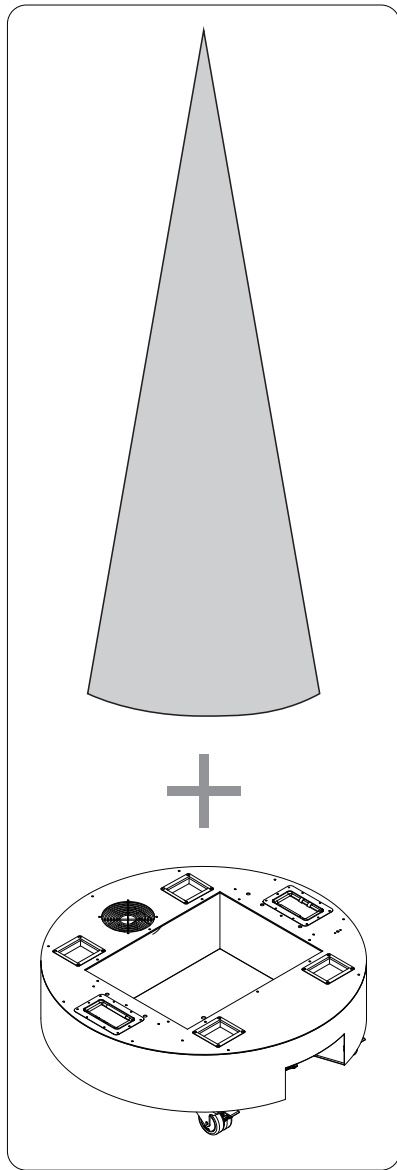
To lift the equipment, grip it by the body with both hands.

General Information / Product Overview

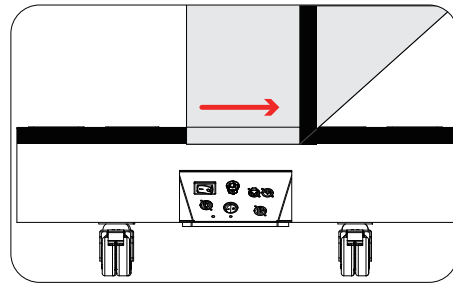


- 1. Fan cover -Do not cover for proper function
- 2. Handle
- 3.Wheel fixing plate

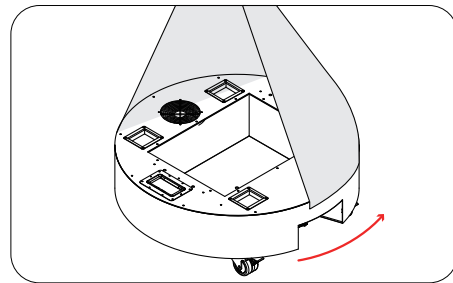
## Instructions and mounting options



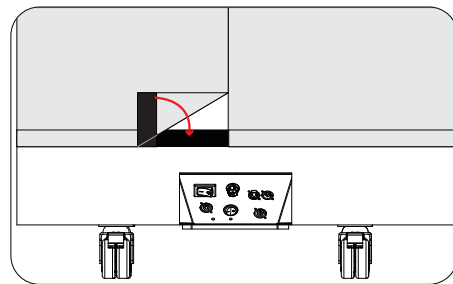
**Air totem mounting method**



1. The air totem should be stuck to the velcro on the body of the light  
*Attention: When sticking, the lower edge of the air totem should be aligned with the lower edge of the Velcro.*



2. Stick it in a counterclockwise direction.

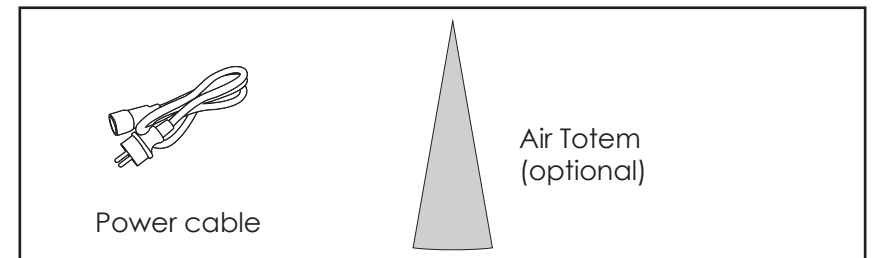


3. Stick the air totem tightly.

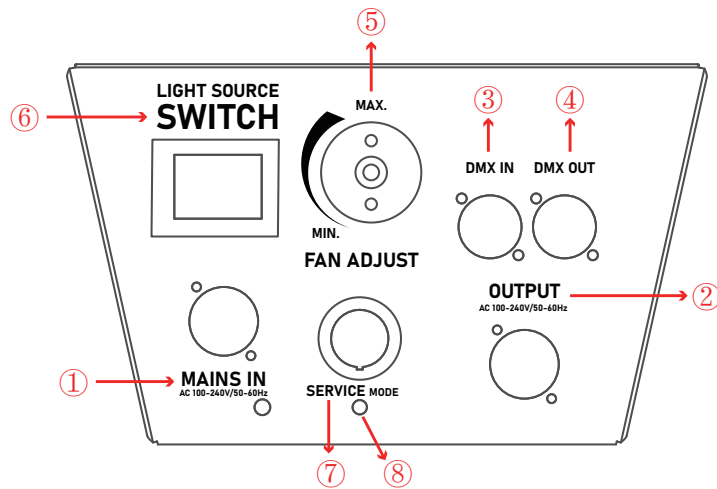
## Technical data

- IP Rating (without air totem) : IP30  
(with air totem) : IP32
- 3pin XLR wiring: (+) = pin3; (-) = pin2; (Ground) = pin1
- Weight: 20kg
- Voltage Range: 100-240VAC 50/60HZ
- Total power: 143W
- Maximum withstand current: 10A

## Accessories

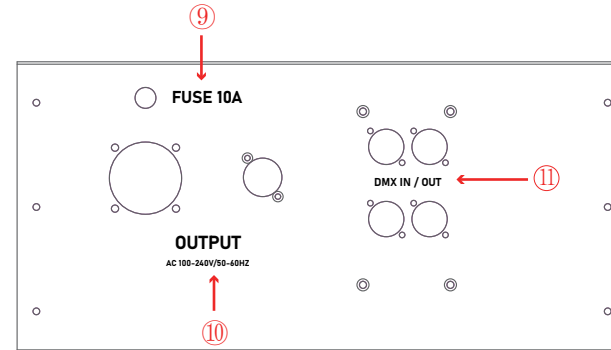


## Control panel



1. Powercon Input
2. Powercon Output
3. 3 pin XLR DMX Input
4. 3 pin XLR DMX Output
5. FAN ADJUST:
  - MIN: The minimum fan speed
  - MAX: The maximum fan speed
6. LIGHT SOURCE SWITCH : Supply power to the light placed inside the fan base
7. SERVICE MODE: It needs to be used together with the light source switch, When both buttons are turned on simultaneously, the Light Source Switch will power the interior lights without waiting for the air pressure difference between the inside and outside of the air totem to form.
8. LED control status: The green light stays on indicating that the service mode is on.

## Power supply equipment mode



9. FUSE 10A
10. European socket power output (Attention: The max power is 100W)
11. 3pin DMX input/output - this signal socket is connected to the signal socket of the control panel.

## Instructions

1. Connect the power ① MAINS IN
2. Turn on ⑥ LIGHT SOURCE SWITCH
3. Turn on ⑦ SERVICE MODE
4. Rotate the knob to adjust the fan speed
  - MAX means the maximum fan speed
  - MIN means the minimum fan speed

### **Attention:**

1. When the ⑥ LIGHT SOURCE SWITCH is turned on individually, it requires the air pressure difference between inside and outside the air totem to reach a certain level before ⑩ OUTPUT can be powered.
2. If turn on the ⑥ LIGHT SOURCE SWITCH and then turn on the ⑦ SERVICE switch, there is no need to wait for the air pressure difference between the inside and outside of the air totem to form, the ⑩ OUTPUT can be powered directly.
3. If turn on the ⑦ SERVICE switch individually, the ⑩ OUTPUT cannot be powered.